



IBSF Bobsled & Skeleton North America's Cup
December 4th – 11th, 2019
Invitation



Location:

Utah Olympic Park,
3419 Olympic Parkway
Park City, Utah 84098
USA

Disciplines:

- Women's Skeleton
- Men's Skeleton
- 2Woman Bobsled
- 2Man Bobsled
- 4Man Bobsled

Prizes:

- 1st Place: Gold Medal
- 2nd Place: Silver Medal
- 3rd Place: Bronze Medal
- 4th – 6th Place: Commemorative Medal

Timing:

- 1 / 100th second
- Timing graphics and software provided by ST Sportservice.

Participation Eligibility:

- The competition will be carried out in compliance with IBSF rules.
- All athletes must have a valid IBSF electronic license.
- **Statement of Liability** - All athletes, officials and other members of the national associations who attend and participate in the event do so at their own risk. The organizer shall not be responsible for any loss or injuries incurred or suffered by any athlete or official in conjunction with the organization or staging of the event. All athletes are required to be covered by insurance against accidents deriving from the practice of bobsleigh (and/or skeleton) racing, including civil damages to third parties, for transport by ambulance, medical treatment and hospital treatment.

Online registration available at <http://ibsf.sportresult.com>

Registration Deadline: November 29th, 2019

Entry On or Before the Registration Deadline

- \$20 U.S. per Bobsled Athlete per Race
- \$25 U.S. per Skeleton Athlete per Race

Entry After the Registration Deadline

- \$40 U.S. per Bobsled Athlete per Race
- \$50 U.S. per Skeleton Athlete per Race

Entry Fee: Fees must be paid prior to the first team captains meeting in cash or credit in U.S. dollars only.

Arrival Information:

Upon arrival, all team captains will need to check-in at the Race Office to have athletes sign required waivers, complete their paperwork, and receive event parking permits.

Sled Unloading/Loading:

Shippers/Teams must notify RJ Shannon, rshannon@uolf.org, 72 hours prior to sled crate transport arrival and departure, including proper documentation, labeled functional crates and contact information, or unloading/loading fees may be applicable.



**IBSF Bobsled & Skeleton North America's Cup
December 4th – 11th, 2019
Invitation**



Race Administration

- IBSF North America's Cup Coordinator:** Nicola Minichiello
- Bobsled Jury President:** Sue Kapis - USA
- Bobsled Jury Member:** Aaron Lanningham - USA
- Bobsled Jury Member:** Tim Dyrigas - CAN
- Bobsled Material Commission:** Brad Hansen - USA
- Bobsled Material Commission:** Jason Blake - USA
- Bobsled Race Director:** Valerie Fleming
- Skeleton Jury President:** John Rosen - USA
- Skeleton Jury Member:** Tina Blake - USA
- Skeleton Jury Member:** Ryan Good - CAN
- Skeleton Material Commission:** Steve Revelli - USA
- Skeleton Material Commission Assistants:** Fuzzy Furr - USA
- Skeleton Race Director:** Cassie Revelli

Organizing Committee / Chief of Track:

RJ Shannon
Track Operations Senior Manager
Utah Olympic Park
P.O. Box 980337
3419 Olympic Parkway
Park City, Utah 84098-0337, USA
Phone: + 1 435.731.6385 / Email: rshannon@uolf.org



**IBSF Bobsled & Skeleton North America's Cup
December 4th – 11th, 2019
Invitation**



Schedule

Wednesday, December 4th:

- 14:00 Men's & Women's Skeleton Team Captains Meeting Located on the 2nd Floor of the Olympic Legacy Center
15:00 Men's & Women's Bobsled Team Captains Meeting Located on the 2nd Floor of the Olympic Legacy Center

Thursday, December 5th:

- 09:30 Men's & Women's Skeleton – Two Official Training Runs
14:00 Men's & Women's Bobsled – Two Official Training Runs

Friday, December 6th:

- 09:30 Men's & Women's Skeleton – Two Official Training Runs
14:00 Men's & Women's Bobsled – Two Official Training Runs

Saturday, December 7th:

- 13:00 Men's & Women's Bobsled – Two Official Training Runs
Men's & Women's Bobsled Race Draw Thirty Minutes after Official Training Located on the 2nd Floor of the OLC

Sunday, December 8th:

- 13:00 Men's & Skeleton Skeleton – Two Official Training Runs
Men's & Women's Skeleton Race Draw Thirty Minutes after Official Training Located on the 2nd Floor of the OLC

Monday, December 9th:

- 09:30 Men's & Women's Skeleton Races
13:30 2Man Bobsled & 2Women's Bobsled Races

Tuesday, December 10th:

- 09:30 Men's & Women's Skeleton Races
Men's & Women's Skeleton Awards Ceremony Twenty Minutes after Race Located in the Medals Plaza
13:30 2Man Bobsled & 2Women's Bobsled Races
2Man Bobsled & 2Women's Bobsled Awards Ceremony Twenty Minutes after Races Located in the Medals Plaza

Wednesday, December 11th:

- 09:30 4Man Bobsled Race
13:30 4Man Bobsled Race
4Man Bobsled Awards Ceremony Twenty Minutes after Races Located in the Medals Plaza



IBSF Bobsled & Skeleton North America's Cup
December 4th – 11th, 2019
Invitation





RESIDENCES
AT UTAH OLYMPIC PARK

RESERVATIONS:
+1(435) 658-9114 | Housing@uolf.org
2830 Olympic Park Way
Park City, UT 84098
olympicparkresidences.com



RATES: Subject to availability, minimum length stays, blackouts, and other restrictions apply. Prices listed do not include taxes and fees.

9/1/2019 - 11/24/2019	
Standard Hotel Room with 2 Double beds	\$80
2 Bedroom Hotel Suite	\$100

11/25/2019 – 12/15/2019	
Standard Hotel Room with 2 Double beds	\$95
2 Bedroom Hotel Suite	\$120

12/16/2019 - 12/31/2019	
Standard Hotel Room with 2 Double beds	\$120
2 Bedroom Hotel Suite	\$140

1/1/2020 – 3/30/2020	
Standard Hotel Room with 2 Double beds	\$140
2 Bedroom Hotel Suite	\$160

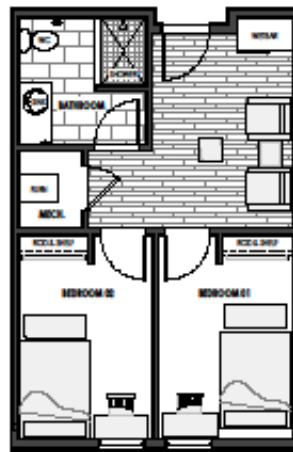
4/1/2020 – 5/31/2020	
Standard Hotel Room with 2 Double beds	\$80
2 Bedroom Hotel Suite	\$100

Standard Hotel Room



Standard Hotel Room:
2 Double Beds, Non-smoking, Refrigerator.

Two Bedroom Suite



Two Bedroom Suite:
2 Bedrooms with a single double bed in each bedroom, Non-smoking, Refrigerator.

DEPOSIT & CANCELLATION POLICY

- First nights deposit due at time of booking. (non-refundable).
- Final payment due at 14 days prior to arrival.
- Any room cancellations occurring 7-14 days prior to arrival are subject to a 50% cancellation fee.
- Any room cancellations within 6 days prior to arrival are non-refundable.

GROUPS

- Please contact us for special arrangements if booking 5 rooms or more.
- Groups will be required to sign a group contract.

ALL GUESTS RECEIVE ACCESS TO:

- Fully equipped self-serve kitchen with seating for up to 36 guests
- Outdoor lounge with grill
- Video review lounges on each floor
- Outdoor bike rack and washing station
- 43" flat-panel Roku TV
- High speed internet
- Coin operated laundry
- Conference room access
- Access to Park City trail system
- Wheelchair access
- ADA units

2830 Olympic Park Way | Park City, UT 84098 | olympicparkresidences.com



**IBSF Bobsled & Skeleton North America's Cup
December 4th – 11th, 2019
Invitation**



**BW Best Western PLUS Landmark Inn
Park City, Utah**

Olympic Park

2019-2020 Contracted Rates



Rates:

based on double occupancy. *10/night each add'l adult

5/1/2019-12/15/2019

Room Type	Rack Rate	Group Rate	Meal Plans
Standard room with 2 queen beds	\$149	\$109	Single \$159
Deluxe room with 2 queen beds	\$169	\$119	Double \$219
Deluxe room with 1 king bed	\$169	\$119	

12/16/2019-3/31/2020

Room Type	Rack Rate	Group Rate	Meal Plans
Standard room with 2 queen beds	\$249	\$159	Single \$219
Deluxe room with 2 queen beds	\$289	\$169	Double \$289
Deluxe room with 1 king bed	\$289	\$169	

4/1/2020-4/30/2020

Room Type	Rack Rate	Group Rate	Meal Plans
Standard room with 2 queen beds	\$169	\$119	Single \$159
Deluxe room with 2 queen beds	\$179	\$129	Double \$219
Deluxe room with 1 king bed	\$179	\$129	

Room Types (based on availability): All rooms have Simmons Pillow Top Mattress, refrigerator, individual cup coffee maker, hair dryer, 32" television, iron & full-size ironing board plus an in-room safe. Deluxe, pool-side & suites have a microwave, double bathroom sinks and 42"TV. Also included is a full,

- Standard:** 2 queen beds
- Deluxe Queen:** 2 queen beds
- Deluxe King:** 1 king bed plus queen sleeper sofa
- Jr. Family Suite:** 2 queen beds plus queen sofa sleeper
- Corner Hot Tub Suite:** 1 king bed plus queen sofa sleeper and deep soaker hot-tub.
- Hot-Tub Suite:** 1 bedroom with king bed,
- 1 bathroom, kitchenette, living room with fireplace, queen sofa sleeper and two single-fold out beds, private hot tub in an enclosed solarium.
- Family Suite:** 2 bedrooms (1 with king bed plus queen sleeper sofa and 1 with 2 queen beds), 2 bathrooms, full size kitchen, living room with fireplace and queen sofa sleeper plus 2 single fold out beds.

Bobsled containers available with power - \$800

*All rooms are subject to 11.17% Lodging Tax.
Roll-away beds: \$10 regular twin; \$15 deluxe twin*

Reservations • 800-548-8824

6560 N Landmark Dr. • Park City, Utah 84098

Phone: 435-649-7300 • Fax: 435-649-1760

sales@bwlandmarkinn.com

www.bwlandmarkinn.com

Hotel Amenities include:

- Indoor pool and extra-large hydro spa hot tub
- Free high-speed wireless throughout hotel
- Business center with computer, scan and printing capabilities
- Complimentary 24-hour hot beverage bar and fresh baked cookies
- Pet-friendly with restrictions and fee
- Exercise room and Dry Sauna
- 24-hour convenience store on-site
- Spacious elegant lobby with fireplace
- Video arcade, pingpong, and pool table
- Meeting rooms and banquet facilities
- Cable TV and free HBO
- Daily Housekeeping service
- Guest laundry

30 day cancellation policy: Cancellation must be done thirty days prior to day of arrival or penalty of first night room and taxes charged. Cut off date for discount rates to be determined upon booking.